

The Lamplighter

Emmanuel United Methodist Church

Our Mission: To share the light of Christ with all people

January - February 2019

www.eumcbeltsville.com

Happy New Perspective!

Okay, it's not the greeting that you were expecting. By now, I'm sure you realize you won't get the status quo. If you are like me, you spent the last month trying to finalize things you wanted done in 2018. Most were done, some were not, some will carry over. That's Life. We didn't start the year knowing what was or wasn't going to happen. We may have had plans, but plans don't always go as planned, and we must be okay with that. When we spend our time worrying over what could have, would have, should have been done, we take precious time away from what can happen now. Right now. In this moment of time. Someone or something needs us to be present. There was a song in RENT called "Seasons of Love." One of the verses says, "Five hundred twenty-five thousand, six hundred minutes; How do you measure, measure a year?" Eventually, the song advises us to "Measure in Love... Seasons of Love."



Friends, we are on a journey together. Expect the unexpected. The Bible shares that we shouldn't put new wine in old wine-skins (Matthew 9:17). Having a new perspective about ministry and the many blessings that it brings is a reason to look forward to the new year.

The number "eight" in "2018" is the number that represents new beginnings – I arrived, so some things were bound to be new. The number "nine" in "2019" is the number that represents patience; the perfect movement of God. Nine also represents the Fruit of the Spirit and Gifts of the Spirit:

Fruit of the Spirit Galatians 5:22-23	Gifts of the Spirit 1 Corinthians 12:8-10
Love Joy Peace Patience Kindness Goodness Faithfulness Gentleness Self-control	Word of wisdom Word of knowledge Faith Gifts of healing Working of miracles Prophecy Discernment of spirits Speak in different tongues Interpretation of tongues

We are important to the body of Christ, and God loves us. We are encouraged to use the fruits and gifts that are in each of us to show God's love to others. Ephesians 4:2 says we must act, "*With all humility and gentleness, with PATIENCE, bearing with one another in LOVE.*" [Capitalization is mine for emphasis]. The events of the year will come ready or not, planned or not. Love and patience are key to surviving it. We commit to love our neighbors as ourselves and measure our interactions in Love. I hear it makes the world go around. Happy New Year and Perspective!

~ ~ ~ Pastor Jalene Chase

2019 LENTEN DEVOTIONAL

Lent begins on March 6, 2019. Lent is a journey of 40 days representing the time Jesus spent in the wilderness, enduring the temptation of Satan and preparing to begin his ministry. It is a time of self-examination and reflection.

We all have stories of our lives. Share them with your friends at Emmanuel and be a part of this year's Lenten Devotional. Submissions can be stories (personal or historical), poems, drawings, etc. They do not have to be about Lent or Easter. And yes, you can submit more than one!

Submissions must be received by **February 13th**. They can be emailed (preferred), mailed, left in the "Sisters in Spirit" mailbox for me, or given to the office. God bless our ministries at Emmanuel UMC-Beltsville.

~ ~ ~ Kathy Mellott
kpmellott@verizon.net

BACK BY POPULAR DEMAND

Special thanks to everyone who helped make it possible to distribute Christmas cards at Community Place Cafe on December 21, 2018. You may recall that for Christmas 2017, we asked for cards and stamps for the envelopes to enable the homeless who eat at the Café to send them to their loved ones. We hoped and prayed that the cards would be instrumental in reuniting the senders with their loved ones.

Beginning in October 2018, Christmas cards began to appear in the CPC box near the kitchen, an indication that this project probably should be repeated again in December. As a result of your generosity, 220 cards and stamps were donated.

The cards always have been well received by those who eat at the Café. I would like to share with you two of the many conversations that occurred during the distribution of the cards over the past two years:

- In December 2017, a young man who appeared to be in his early 20's approached the card table and asked how many cards he could have. When I asked him how many he needed, he replied, "Three, please; one for my mother, one for my sister, and one for my brother."
- This past December (2018), a young man came to the table, looked at me for quite a while, hesitated, and then finally selected just one card. When he turned to go, he looked at me again and said, "You remind me of my mother." Then he leaned over and gave me a quick kiss on my cheek.

By the Grace of God, has our goal been accomplished? Have these two young men been reunited with their loved ones? Were there more reunions?

God's miracles never cease. Thanks again, and may you be blessed in 2019!

~ ~ ~ Elsie Cline

What's Happening in United Methodist Women

Submitted by Ernie Kilbourne



United
Methodist
Women

Circles began meeting in January. Sisters in Spirit meets the 3rd Tuesday evening in the Powell Parlor. The Wesley Circle meets on Wednesday for a buffet lunch at 10:00AM and the Hoover Circle meets the 3rd Monday at noon and bring something for their lunch. You are welcome to visit any circle.

The General Meeting will be February 16th. This will be the Call to Prayer and Self Denial, with the leader being Becky Cavallo. Lunch will be four or five different soups, which will be provided by the Executive Committee.

Do you have a question about the UMW? Please phone me, Ernie Kilbourne -- (301) 787-8787.

What is Black History Month?

Submitted by Jane Grays

Black History Month celebrates the contributions made by African-Americans to the history of the United States. The U.S. observes National African-American History Month in February of each year.

In 1915, historian Dr. Carter G. Woodson founded the Association for the Study of Negro Life and History, which later became the Association for the Study of African-American Life and History. This organization inaugurated the first formal acknowledgement of African-Americans' place in U.S. history by designating the week that included February 12 as "Negro History Week" in 1926. This week was chosen because February 12 was President Abraham Lincoln's birthday, and February is the month of famed African-American abolitionist Frederick Douglass' birthday.

In the late 1960s, the Black United Students at Kent State University voted to expand Black History Week into Black History Month. This designation expanded to other academic institutions in the early 1970s. In 1976, President Gerald Ford acknowledged the observance of Black History Month, and Presidents Jimmy Carter and Ronald Reagan continued that tradition.

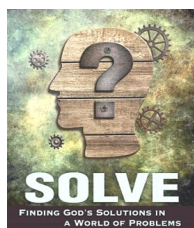
In 1986, Congress passed a law officially designating February as Black History Month and called upon the President to recognize the designation with a proclamation encouraging Americans to observe it with appropriate ceremonies and activities. In 1996, the Senate passed a resolution recognizing Black History Month and the achievements of black senators. Since 1996, each President has issued proclamations recognizing Black History Month.

The Black church and its rich traditions of worship, mission and justice-seeking play a key role in United Methodism. In the Baltimore-Washington Conference, 28 percent of the churches, 23 percent of conference membership, and 29 percent of the pastors are African-American.

A Note to my many friends at Emmanuel Church: I want to thank you for the many Christmas greetings just past. I have been down some, health-wise, with the cold winter. But I'm okay and will be better when spring comes. I wish you a very happy 2019.

~ ~ ~ Dick Karpal

Thursday Evening Bible Study Resumes in February



Emmanuel's Thursday Evening Bible Study will resume on February 7th at 7pm. We will be studying the book *Solve: Finding God's Solutions in a World of Problems*.

Solve is a study about Nehemiah. Nehemiah was not exactly handed a piece of cake. He had to rebuild the wall of Jerusalem after his people returned from exile...that's all. Talk about a problem-solver! Nehemiah chose not to dwell on his complicated task and the many dilemmas that came with it. Instead, he sought God's solutions, following God's lead and trusting God's purpose.

In this five-week study, author Talbot Davis shows us how our problems, as individuals and as a society, are not unlike Nehemiah's. You will see how you can follow in his footsteps, building up your life and the world around you.

This study is open to anyone. As soon as the book comes in, you may pick up a copy from Rick Bergmann if you are interested in the study.

THE LAMPLIGHTER IS A TEAM EFFORT!

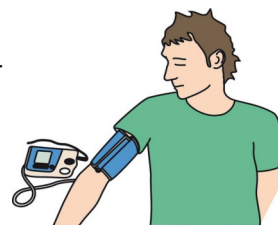


To contact Lamplighter editor Bobbie Deegan with an article, suggestion, or story idea, please e-mail her at BobbieDeegan@aol.com, or phone her at 301-937-7070.

Contributions are always welcome!

Watching your blood pressure?

We have blood pressure monitoring at 11am and 12:15pm on the last Sunday of every month. Just stop by the Powell Parlor (inside the Sanctuary — ask an usher to point it out if you are not sure where it is located!)



Annual Pancake Supper

Emmanuel will host its annual Pre-Shrove Pancake Supper on Saturday, March 2nd at 5pm. Pre-Shrove pancake suppers are a tradition that dates back centuries. Typically, they are held on the Tuesday preceding Ash Wednesday, which is called Fat Tuesday. Emmanuel holds it on the Saturday preceding Ash Wednesday because we teach ESOL (English for Speakers of Other Languages) classes on Tuesday evenings.

The dinner will include all-you-can-eat pancakes and sausage. There also will be gluten-free pancakes for those who have an intolerance to gluten. Besides the meal, there will be games and activities for everyone. The cost is \$10 for adults and \$5 for children ages 4-12. Children 3 and under are free. You may buy tickets on Sunday mornings between services during the month of February, as well as at the door on March 2nd.

For more information, visit our website at www.eumcbeltsville.com or call the office at 301.937.7114.



 **Emmanuel UMC**
Beltsville, Maryland

March 2, 2019

5-7pm

\$10 adults

\$5 children 4-12

Children under 4 eat free

**PANCAKE
SUPPER**

All you can eat pancakes and sausage
(gluten free options will be available).

There will also be Mardi Gras Games and activities for
kids and adults. Wear your most colorful Mardi Gras
clothes!

Emmanuel is located at 11416 Cedar Lane,
Beltsville, MD, 20705.

301.937.7114

office@eumcbeltsville.com

www.eumcbeltsville.com

2019**Emmanuel Church Officers and Committees**

Please note: CC indicates a member on the Church Council

Pastor	Rev. Dr. Jalene Chase
Deaconess	Jane Grays
Lay Leader CC	Roy White
Chair of Church Council CC	Ted Ladd
Recording Secretary CC	Lorna Marselas
Lay Members of the Annual Conference CC ...	Ted Ladd, Roy White
Membership Secretaries CC	Dottie Gilbert, Kathy Rodeffer
Church Historian CC	
2nd Sunday Lunch CC	Tammy White
Angel Tree CC	Becky Cavallo/Jane Grays
Child Care Liaison	Mike Hatton
Children's Ministries CC	Tracy Fuller
Coffee Hour Manager	Pat Allen
Community Place Café CC	Elsie Cline, Sallie Rhodes
Coordinator of Communications	Rick Bergmann
Deaf Fellowship CC	Roy White
DBSA Support Group (co-facilitators) CC	
.....	Linda Hiner, Judy Diedrich
ESOL CC	Pat Allen
Food Closet CC	Kemi Oluwafemi & Grace Eyiba
Health and Welfare	Ilene Forsbacka
Homeless Ministry CC	Shirely Nelson
Hospitality Committee (for Funeral Receptions)	Ann Rowland
IT Committee	Rick Bergmann, Mike Hatton
Music Ministries..CC	Staff: Kathryn Griffin
Native American Ministries Representatives	
.....	Becky Cavallo, Bryant Davis
Prayer Ministries CC	Ernie Kilbourne/Ann Anderson
Safe Sanctuary	Ann Rowland
Scout Advisor CC	Jennifer Kresge
Superintendent of Sunday School CC	Rick Bergmann
United Methodist Men CC	Rick Bergmann
United Methodist Women CC	
Web Site Manager/Sound Coordinator	Rick Bergmann
Worship Ministries CC	Jane Grays
Youth CC	Rick Bergmann

Staff-Parish Relations Committee:

Chair CC Kathy Rodeffer
 Alexandra Scotland, Alice White, Glendy Hernandez, Judy Diedrich,
 Pauli Colburn, Dan Kenyon, John Kaufmann
 Lay Member to the Annual Conference – Ted Ladd, Roy White
 Lay Leader – Roy White

Trustees of the Church:

Chair CC Acting Chair, Barbara Butcher
 Willie Taylor, Charlie Deegan, Lynne Miller, Jimmy Bello,
 Abraham Scotland, Bart Seedee, Todd Reitzel

Finance Committee:

Chair CC.....Mary Ann Vaughan
 PastorPastor Jalene Chase
 Financial Secretary CC.....Bobbie Deegan
 Treasurer CC.....Beverly Ward
 Chair of Church Council.....Ted Ladd
 Lay Leader.....Roy White
 Lay Member to Annual Conference...Ted Ladd
 Trustee Representative
 Staff-Parish Chairperson.....Kathy Rodeffer
 Kemi Oluwafemi, Sallie Rhodes, Andy Onukwubiri

Memorial Committee:

Chair –
 Treasurer – Lorna Marselas
 Jane Grays, Margie Mock, Ann Rowland
 Lay Leader, Trustee Chair
 Church Council Chair

Committee on Nominations and Leader Development:

Chair – Pastor Jalene Chase
 Lay Leader – Roy White
 Linda Hiner, Scarlet Robertson, JoAnne Blakley, Ascenna Scotland,
 Jody Hammond, Kathy Mellott, Mamie Smith, Remi Samu, John Claye

Worship Committee:

Chair CC Jane Grays
 Pastor Jalene Chase, Scarlet Robertson, Kathryn Griffin,
 Pat Allen, Sonia Kassambara, Ann Rowland, Sallie Rhodes

Stewardship Committee:

Chair:
 Pat Allen, Rick Bergmann, Bobbie Deegan, Jane Grays,
 Kathryn Griffin, Todd Reitzel, Mary Ann Vaughan

ALTAR FLOWERS

- January 6 —
- January 13 —
- January 20 —
- January 27 —

- February 3 — Mellott
- February 10 — Kemi O.
- February 17 —
- February 24 —

The FLOWER CHART for 2019 is posted in the hallway next to the mailboxes at the end of the hall. The altar flowers are \$30. When you sign up, please fill out a Flower Request Form and leave it in the office mailbox. **Indicate on the form whether you will take the flowers home or leave them for a shut-in.** (Flowers that you take home are not tax-deductible). Thank you.

JANUARY BIRTHDAYS

1. Carrie White
3. Doug Galloway
7. Katherine Cavallo, Dan Kenyon
11. Jane Grays
12. Dare Hassan
13. Geoffrey Kaufmann
14. Hazel Newell
25. Bonnie Bland, Todd Reitzel
26. Bobbie Deegan
28. Rebecca Vaughan
31. Rick Bergmann

IN MEMORIAM

Christian love and sympathy to:

- Mary Ellen Whitcraft on the death of her husband, Carl Whitcraft, Sr., on December 20th.
- The family of Darlene Baldwin on her passing in Easton, MD on December 27th.
- Jody Hammond and family on the death of her mother in South Africa.
- Elmo Webb and family on the passing of his relative.

May the Holy Spirit comfort these families and all who are mourning.

FEBRUARY BIRTHDAYS

1. Elmer Padgett
2. Sarah Rodeffer, Charles Pavelka
3. Patrick Mellott
9. Georgia Reitzel
13. Barbara Butcher, Emma McNealy
14. Emmet Croson
16. Glenn Colburn, Julie Pavelka
17. Sheun Bello
20. Patrick Elliott, Bob Rodeffer
21. Tobi Oluwafemi
22. Karen Mackey
24. Nancy Zerbe
26. Pastor Jalene, Gary Heath, Rebecca Kirby

GUESTS visiting Emmanuel on one or more Sundays in November and December included:

- Jessica Williams Dela & Abel Martin
- Melanie Beaver

We welcome you to our church family! Please worship with us again soon.

ANNIVERSARIES

January

- 14. Nancy & Rick Zerbe

February

- 2. Katie & John Kaufmann
- 20. Pauli & Glenn Colburn

BE A GREETER OR SCRIPTURE READER!

Help make Emmanuel a friendly, welcoming congregation! Share the Word of the Lord! To volunteer to cover one or more Sundays as a Greeter or Scripture Reader, please put your name on the sign-up sheet posted on the bulletin board in the hallway outside the Sanctuary.

No experience necessary — we will train!



Emmanuel has Online Giving!

And it's easy to use! Just go to our website — www.EUMCBeltsville.com —and follow the prompts to go to a secure Online Donation page hosted by Vanco Services, LLC. If you prefer, you can scan this QR instead.



January 2019

Sun	Mon	Tue	Wed	Thu	Fri	Sat
		<i>1</i>	<i>2</i>	<i>3</i>	<i>4</i>	<i>5</i> <i>5 pm NA</i>
6 <i>9 & 11:15am Worship</i> <i>10:15am Sunday School,</i> <i>Bible Study</i> <i>12:45pm Chancel Choir</i>	<i>7</i>	8 <i>10am Prayer Fellowship</i>	9 <i>7pm Trustees</i>	<i>10</i>	<i>11</i>	12 <i>5pm NA</i>
13 <i>9 & 11:15am Worship</i> <i>10:15am Sunday School,</i> <i>Bible Study</i> <i>2nd Sunday Lunch</i> <i>12:45pm Chancel Choir</i>	14 <i>7pm Depression/</i> <i>Bipolar Support</i> <i>Group</i>	15 <i>7pm Sisters in</i> <i>Spirit</i>	16 <i>10am Susanna</i> <i>Wesley Circle</i>	<i>17</i>	18 <i>11am</i> <i>Community</i> <i>Place Café</i>	19 <i>5pm NA</i>
20 <i>9 & 11:15am Worship</i> <i>10:15am Sunday School,</i> <i>Bible Study</i> <i>12:45pm Chancel Choir</i>	21 <i>12 Noon Ellen</i> <i>Hoover Circle</i>	22 <i>10am Prayer</i> <i>Fellowship</i>	23	24	25	26 <i>10am Food</i> <i>Distribution</i> <i>5 pm NA</i>
27 <i>9 & 11:15am Worship</i> <i>10:15am Sunday School,</i> <i>Bible Study</i> <i>12:45pm Chancel Choir</i>	28 <i>7pm Depression/</i> <i>Bipolar Support</i> <i>Group</i>	29	30 <i>7pm Church</i> <i>Council</i>	31		

February 2019

Sun	Mon	Tue	Wed	Thu	Fri	Sat
					1	2 5pm NA
3 9 & 11:15am Worship 10:15am Sunday School, Bible Study 12:30 pm UMW Executive Meeting 12:45pm Chancel Choir	4	5	6	7 7pm Bible Study	8	9 5pm NA
10 9 & 11:15am Worship 10:15am Sunday School, Bible Study 2nd Sunday Lunch 12:30 Youth Fellowship 12:45pm Chancel Choir	11 7pm Depression/ Bipolar Support Group	12 10am Prayer Fellowship 7pm ESOL	13 7pm Trustees	14 7pm Bible Study	15 11am Community Place Café	16 12 Noon UMW General Meeting 5pm NA
17 9 & 11:15am Worship 10:15am Sunday School, Bible Study 12:45pm Chancel Choir	18 12 Noon Ellen Hoover Circle 7pm SPRC	19 7pm ESOL 7pm Sisters in Spirit Circle	20 10am Susanna Wesley Circle	21 7pm Bible Study	22	23 10am Food Distribution 5pm NA
24 9 & 11:15am Worship 10:15am Sunday School, Bible Study 12:45pm Chancel Choir 11am & 12:15pm Blood pressure monitoring	25 7pm Depression/ Bipolar Support Group	26 10am Prayer Fellowship 7pm ESOL	27 7pm Church Council	28 7pm Bible Study		

Emmanuel United Methodist Church
11416 Cedar Lane
Beltsville, MD 20705
301-937-7114
Web: www.emmanuelumcbeltsville.net
Address Service Requested

NON-PROFIT ORG.
U.S. POSTAGE
PAID
BELTSVILLE, MD
PERMIT NO. 5363



In This Issue

Pastor's Message

Lenten Devotional

Christmas Card Miracle?

UMW Happenings

Black History Month

New Bible Study

Pre-Shrove Breakfast

2019 Church Leaders

Altar Flowers/Birthdays/Anniversaries

Online Giving

Readers & Greeters/Visitors/In Memoriam

December and January Calendars